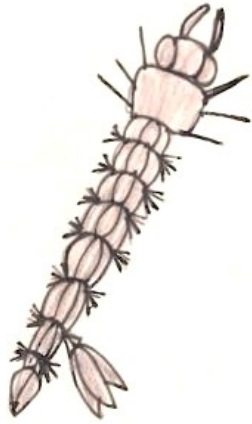


Bug K



The Morton Arboretum

Bug C



The Morton Arboretum

Bug E



The Morton Arboretum

Bug L



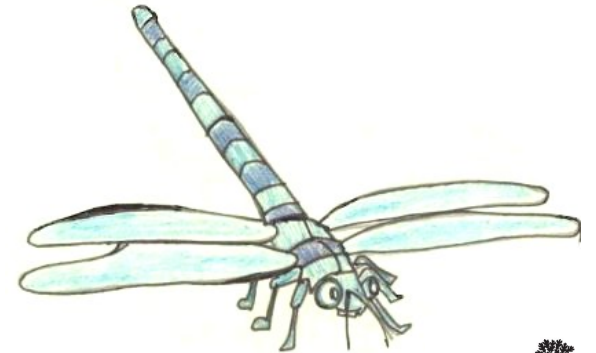
The Morton Arboretum

Bug D



The Morton Arboretum

Bug F



The Morton Arboretum

Bug G



Bug Chart

- *Color the Boxes for each part that the only **BABY** has **BLUE**
- * Color the Boxes for each part that **Only the ADULT** has **RED**
- *Color the parts that they both have **PURPLE**
- *If neither baby nor adult has this feature leave it white.

	Legs	Wings	Antennae	Eyes
Caterpillar/Butterfly (C +D)				
Dragonfly +Nymph (E+F)				
Grasshopper Nymph + Grasshopper (G +H)				
Larvae +Mosquito (K +L)				

Bug H

