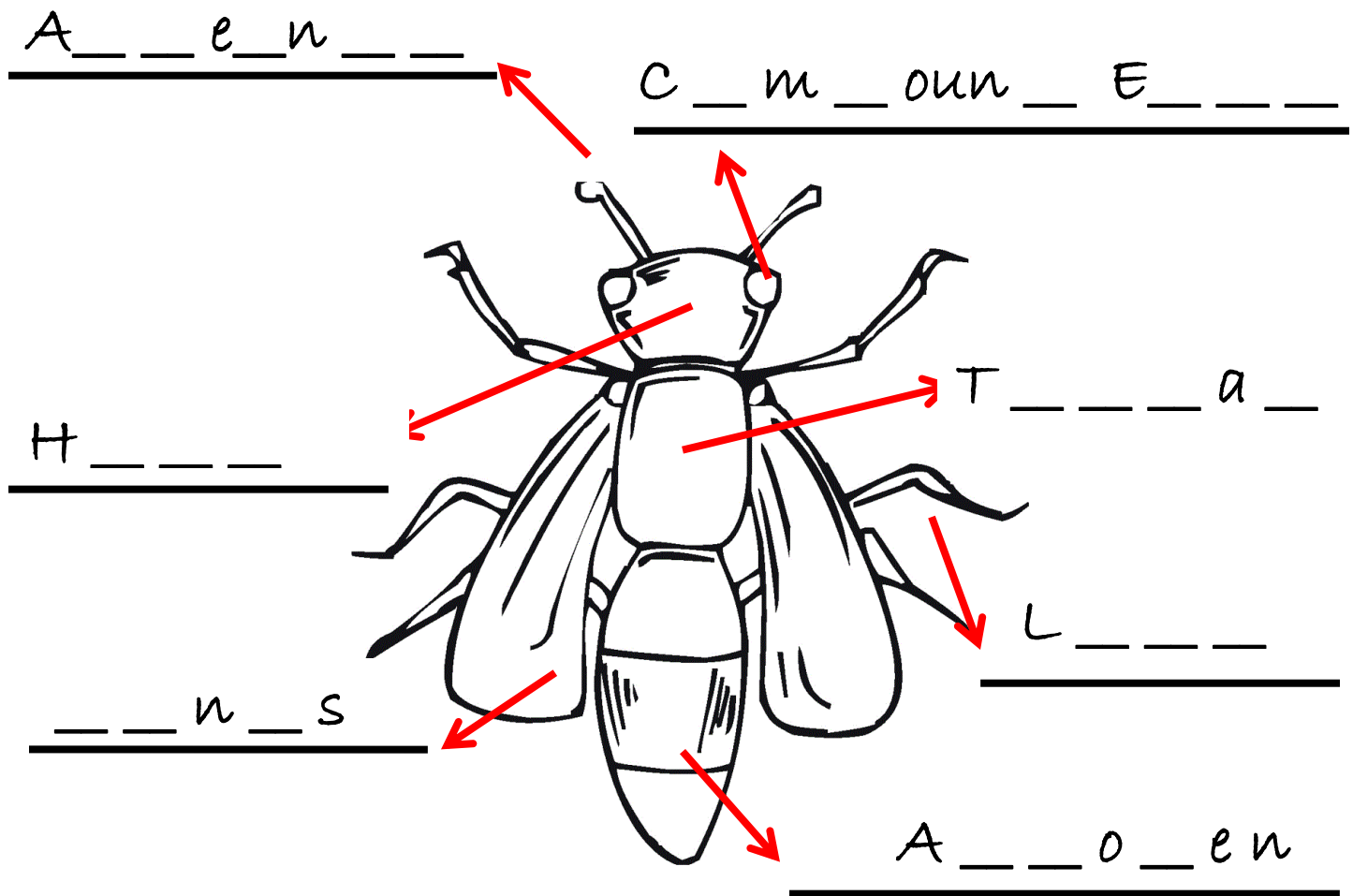


Bugs Abound: What is a Bug? Post Field Trip Assessment

DIRECTIONS: Use the words in the Word Bank to label the bug below. Use each word only once. Then answer the questions below.

<u>WORD BANK</u>			
Legs	Thorax	Abdomen	Antennae
Head	Wings	Compound Eyes	



DIRECTIONS: Circle the correct answer.

Does every bug have 3 body segments?

YES

NO

Does every bug have wings?

YES

NO

Does a bug have 3 legs, 6 legs, or 8 legs?

3 legs

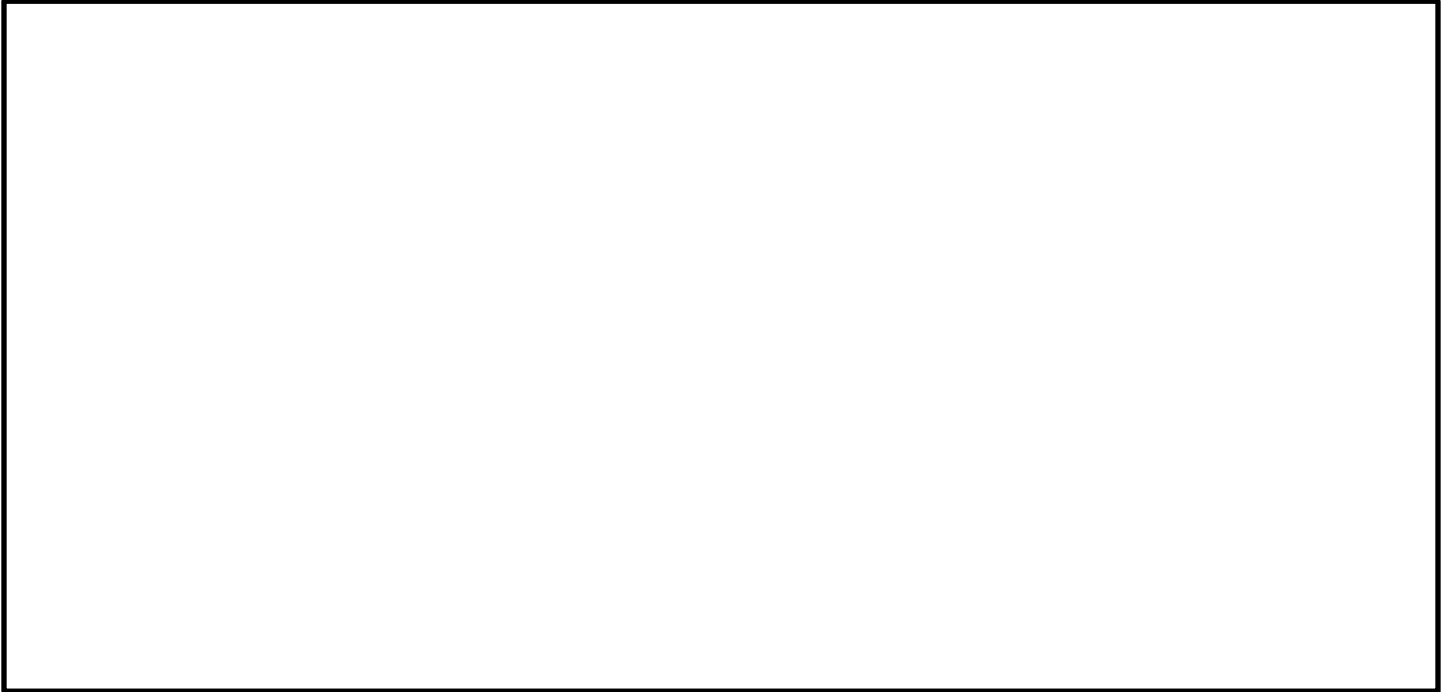
6 legs

8 legs

Bugs Abound: What is a Bug? Post Field Trip Assessment

BUILD A BUG

DIRECTIONS: In the box below, draw your own bug. Then write about your bug. What body parts does it have? How many legs does it have?





THE
CHAMPION
of TREES

Bugs Abound: What is a Bug? Post Field Trip Assessment

Handwriting practice lines for the assessment. Each set includes a solid top line, a dashed midline, and a solid bottom line. There are 11 sets of these lines provided for writing.

BUILD A BUG - Rubric

NAME:

Standard	10	8	7	6	SCORE
<p>CCSS.ELA W.1.3 Student writes an informative/ explanatory text in which they (1) name a topic, (2) supply some facts about the topic, and (3) provide some sense of closure.</p>	<p>The topic of a bug is clear as the student informs or explains, using at least 3 facts and a closing.</p>	<p>The topic of a bug is somewhat clear and/or the student strays from informing or explaining. The student uses 2 or more facts about their bug. A closing is present but might be unclear or weak.</p>	<p>The student mostly informs or explains about the topic of their bug. The student uses 1 or more facts about their bug. A closing is very weak or missing.</p>	<p>The student struggles with informing or explaining the topic of their bug OR the topic is unclear. Facts about their bug are weak or missing. A closing is missing.</p>	
<p>CCSS.ELA L.1.1 Student demonstrates command of the conventions of standard English grammar and usage when writing or speaking.</p>	<p>Student prints all upper- and lowercase letters correctly and produces all complete sentences.</p>	<p>Student mostly prints all upper- and lower case letter correctly (1-2 errors). Sentences are mostly complete.</p>	<p>Student progresses in printing upper- and lower case letters with 3-5 errors, OR it was written in all upper- or all lowercase letters. Student is progressing in learning complete sentences.</p>	<p>The student struggles with writing their letters correctly. The student struggles with learning complete sentences.</p>	
<p>CCSS.ELA L.1.2 Student demonstrates command of the conventions of standard English capitalization, punctuation, and spelling when writing.</p>	<p>Student uses correct capitalization and uses correct end punctuation in sentences. The vocabulary words reviewed in the lesson are spelled correctly.</p>	<p>The student mostly uses correct capitalization and end punctuation with only 1 error. The student uses only one vocabulary word and/or has 1 spelling error.</p>	<p>The student progresses in using correct capitalization and end punctuation with 3-5 errors. There are 2-4 spelling errors in the vocabulary words.</p>	<p>The student struggles using correct capitalization. There is a lack of [correct] end punctuation. They lack vocabulary words and/or have more than 5 spelling errors.</p>	
<p>NGSS I-LS1-1 Use materials to design a solution to a human problem by mimicking how plants and/or animals use their external parts to help them survive, grow, and meet their needs.</p>	<p>Student identifies the following external parts of a bug in their drawing to help them survive and meet their needs: 6 legs, 3 body segments, 2 antennae, & compound eyes.</p>	<p>The student includes all the following external parts of a bug but with 1-2 errors such as an incorrect amount: 6 legs, 3 body segments, 2 antennae, & compound eyes.</p>	<p>The student includes 3 of the following external parts of a bug OR has 3 or more errors such as an incorrect amount: 6 legs, 3 body segments, 2 antennae, & compound eyes.</p>	<p>The student did not draw a bug OR had 4 or more errors on the following external parts of a bug such as an incorrect amount: 6 legs, 3 body segments, 2 antennae, & compound eyes.</p>	

COMMENTS: